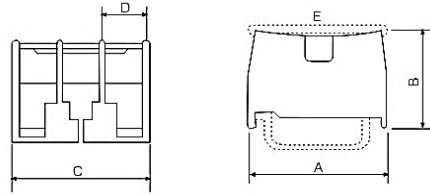


IN TERMINAL BLOCKS



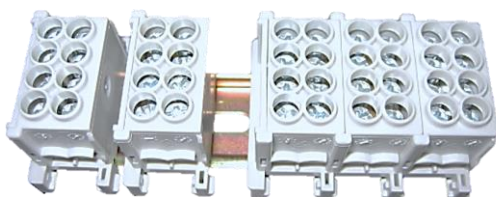
Rated Voltage : 600V

Dielectric Strength : 2500V, 1 mm

Isulation Resistance : 100MΩ min

Item	Description	Ratings	Dimension (mm)					Qty Per Box
			A	B	C	D	E	
1	IN12BK-C	2P 2mm ² max 20A	40	30	20	8	37	20
2	IN13SBK-C	3P 2mm ² max 20A	40	30	25.5	6.7	37	10
3	IN20BK-C	3P 3.5mm ² max 30A	40	30	35	9.7	37	10
4	IN30BK-C	3P 8mm ² max 50A	45	34	43	12.2	48	10
5	IN411S-C	1P 14mm ² max 60A	45	34	17	13.5	48	20
6	IN60BK-C	1P 22mm ² max 90A	56	38	23	17	56	15
7	IN100K-C	1P 38mm ² max 130A	75	45	32.5	24	73.5	5
8	IN200K-C	1P 100mm ² max 240A	86	57	40	31	85.5	5
9	IN400K-C	1P 200mm ² max 370A	125	73	63	52	126	4

'WERIT' BI TERMINALS (GERMANY)



Voltage : 400 V , According to VDE 0603-2

Insulation : Current-Carrying Polyamide

Color : RAL 7035

Item	Description	No. of cable entry	Cable size
1	BI 63	4	4 X 16mm ²