

Operator
Telephone
Fax
e-Mail

Table of contents

Project 1

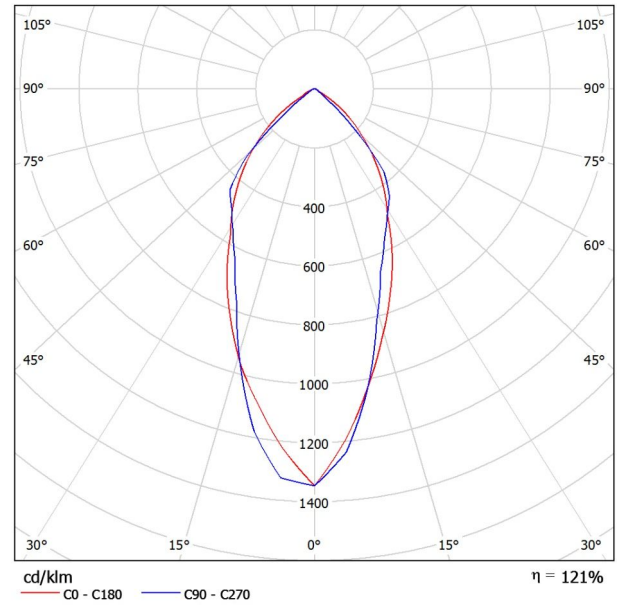
Table of contents	1
NOVETE ES2330-200W200 Tennis Court Lighting	
Luminaire Data Sheet (Tennis Court)	2
Luminaire parts list	3
Luminaires (layout plan)	4
Luminaires (coordinates list)	5
Sport Sites (layout plan)	6
3D Rendering	7
False Color Rendering	8
Exterior Surfaces	
Floor component 1	
Surface 1	
Isolines (E)	9
Value Chart (E)	10

Operator
Telephone
Fax
e-Mail

NOVETE ES2330-200W200 / Luminaire Data Sheet

Luminous emittance 1:

See our luminaire catalogue for an image of the luminaire.



Luminaire classification according to CIE: 100
CIE flux code: 80 98 100 100 122

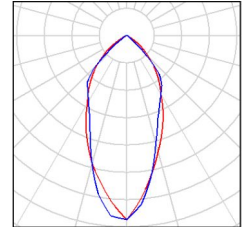
Due to missing symmetry properties, no UGR table can be displayed for this luminaire.

Operator
Telephone
Fax
e-Mail

Tennis Court/ Luminaire parts list

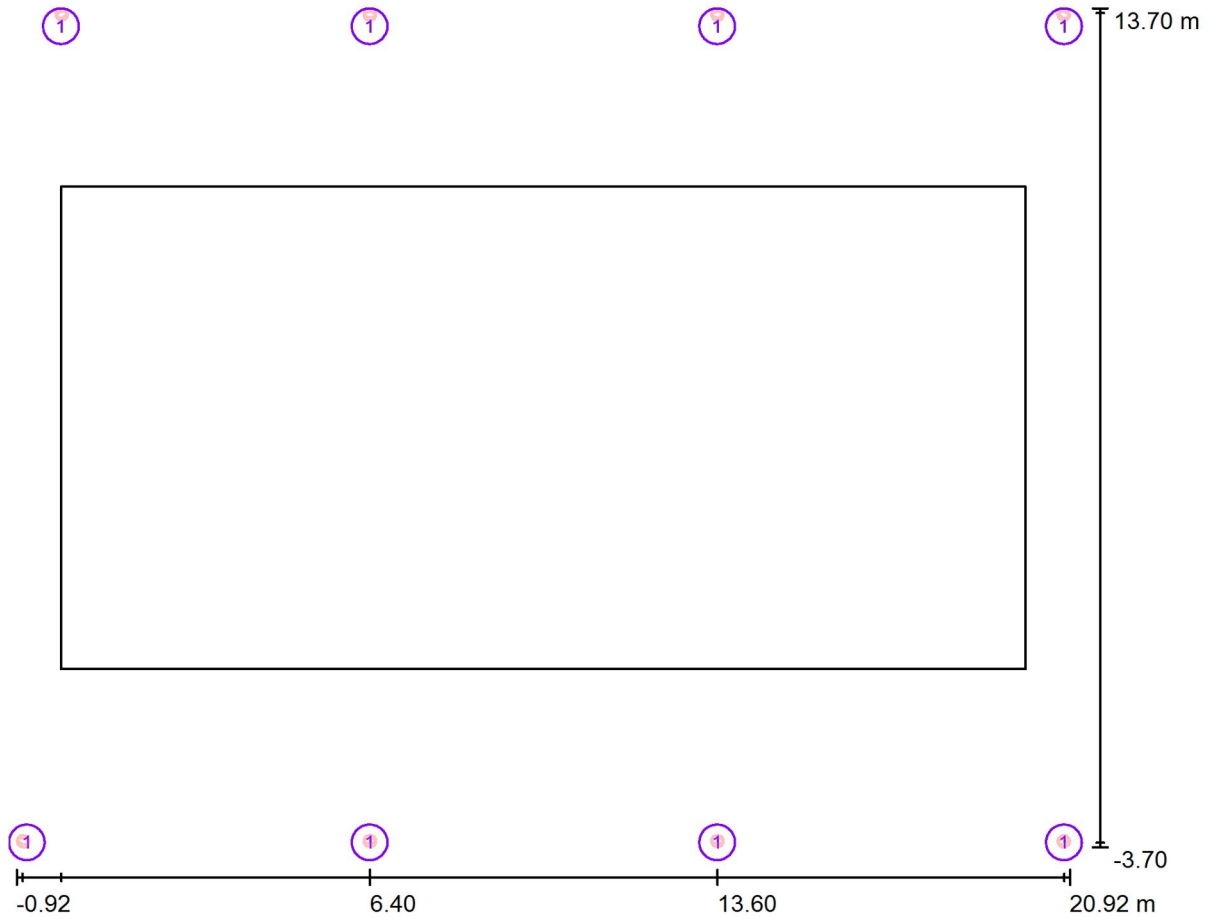
8 Pieces NOVETE ES2330-200W200
Article No.:
Luminous flux (Luminaire): 22830 lm
Luminous flux (Lamps): 22830 lm
Luminaire Wattage: 219.4 W
Luminaire classification according to CIE: 100
CIE flux code: 80 98 100 100 122
Fitting: 1 x ES2330-200w200
(Correction Factor 1.000).

See our luminaire
catalogue for an image
of the luminaire.



Operator
 Telephone
 Fax
 e-Mail

Tennis Court/ Luminaires (layout plan)



Scale 1 : 157

Luminaire Parts List

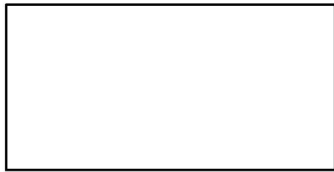
No.	Pieces	Designation
1	8	NOVETE ES2330-200W200

Operator
Telephone
Fax
e-Mail

Tennis Court / Luminaires (coordinates list)

22830 lm, 219.4 W, 1 x 1 x NOVETE ES2330-200W200
(Correction Factor 1.000).

② ④ ⑥ ⑧

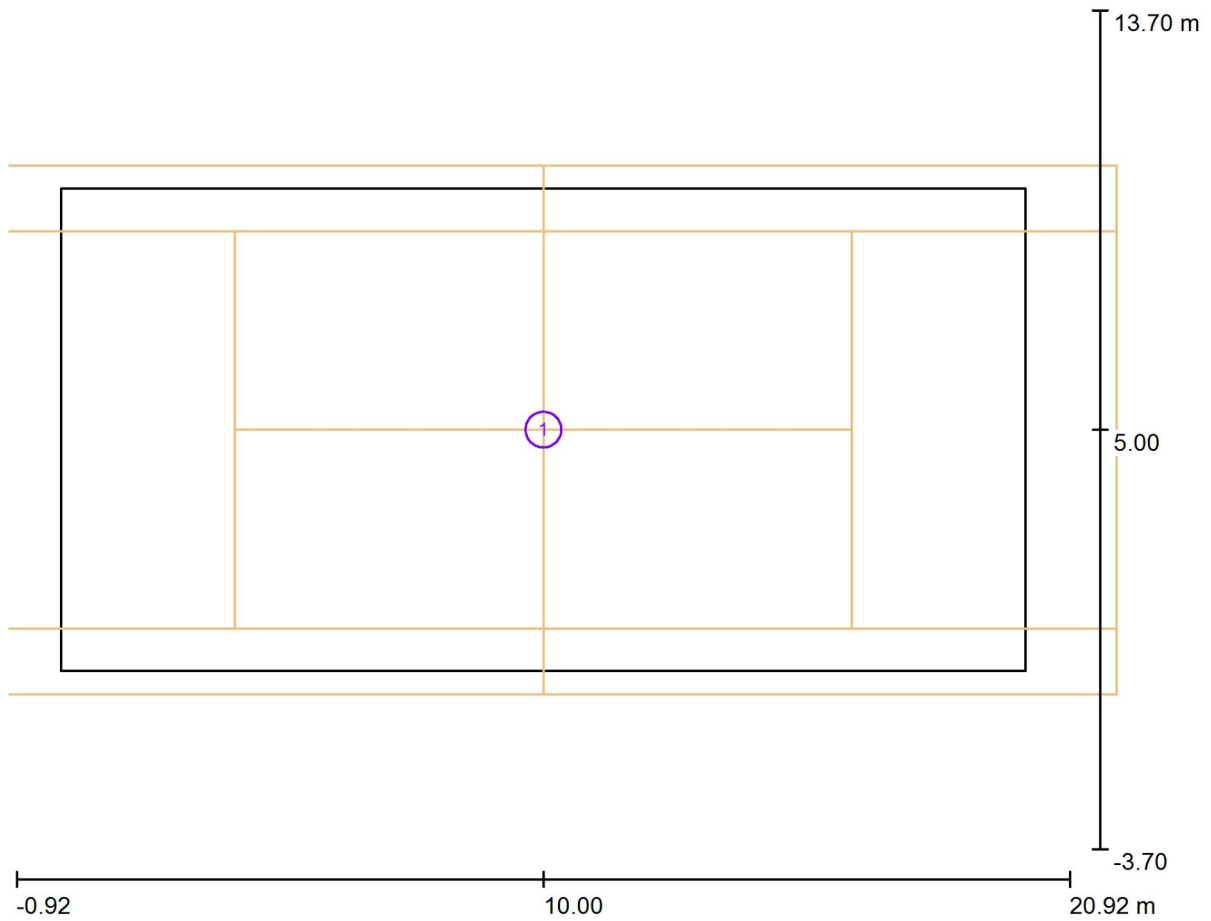


① ③ ⑤ ⑦

No.	Position [m]			Rotation [°]		
	X	Y	Z	X	Y	Z
1	-0.800	-3.600	8.000	0.0	-40.0	70.0
2	0.000	13.600	8.000	0.0	40.0	110.0
3	6.400	-3.600	8.000	0.0	40.0	-90.0
4	6.400	13.600	8.000	0.0	40.0	90.0
5	13.600	-3.600	8.000	0.0	40.0	-90.0
6	13.600	13.600	8.000	0.0	40.0	90.0
7	20.800	-3.600	8.000	0.0	40.0	-70.0
8	20.800	13.600	8.000	0.0	40.0	70.0

Operator
 Telephone
 Fax
 e-Mail

Tennis Court / Sport Sites (layout plan)



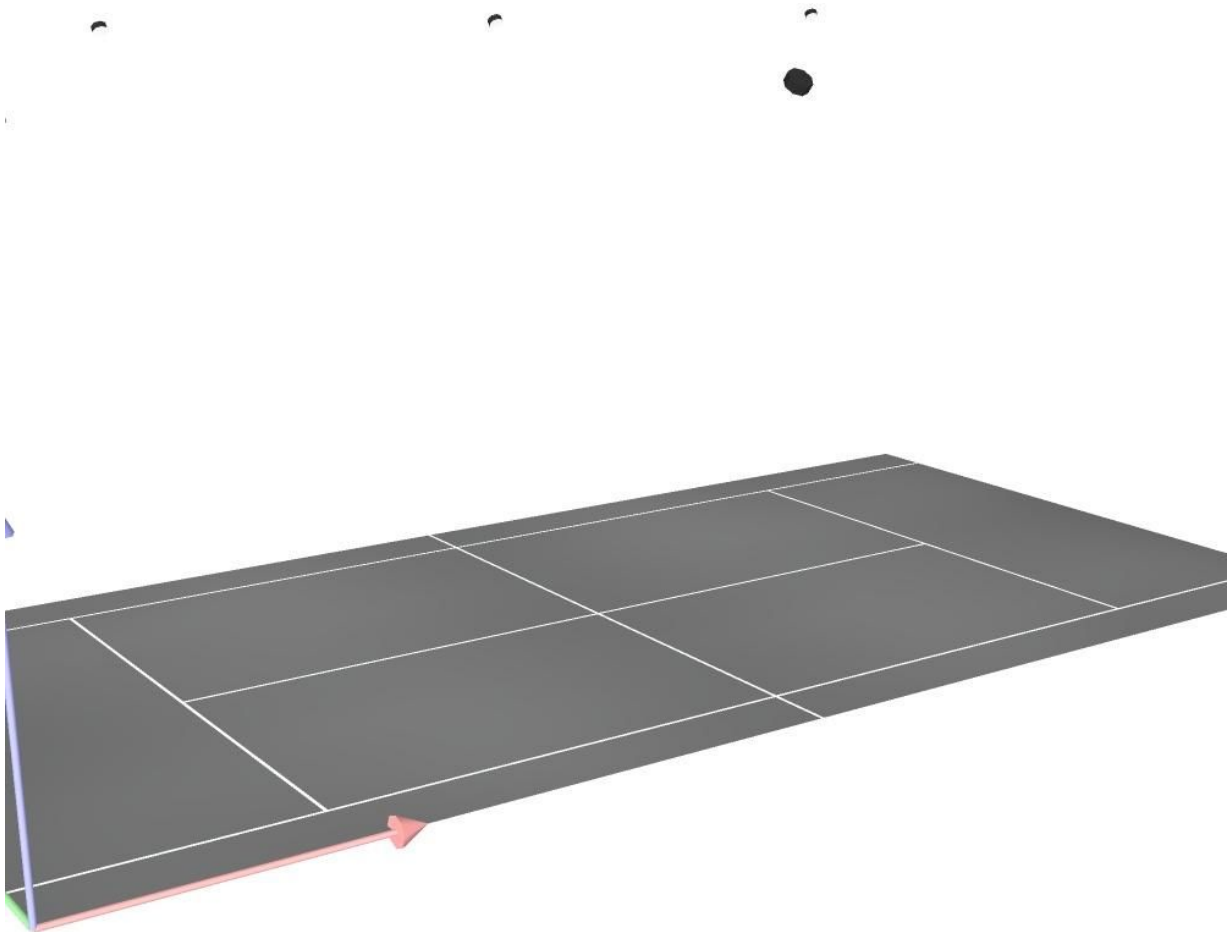
Scale 1 : 157

Sport Site Parts List

No.	Pieces	Designation
1	1	Tennis Court

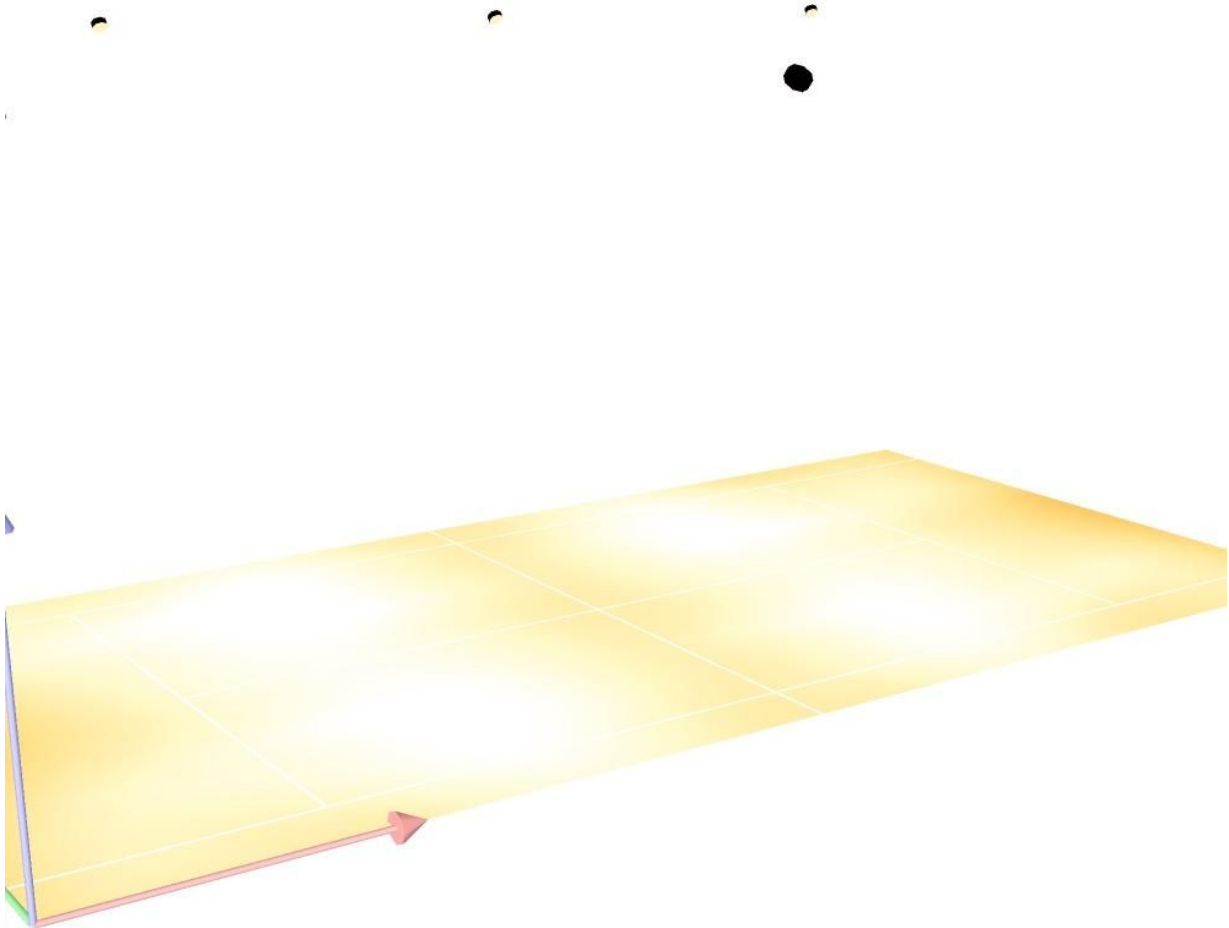
Operator
Telephone
Fax
e-Mail

Tennis Court/ 3D Rendering



Operator
Telephone
Fax
e-Mail

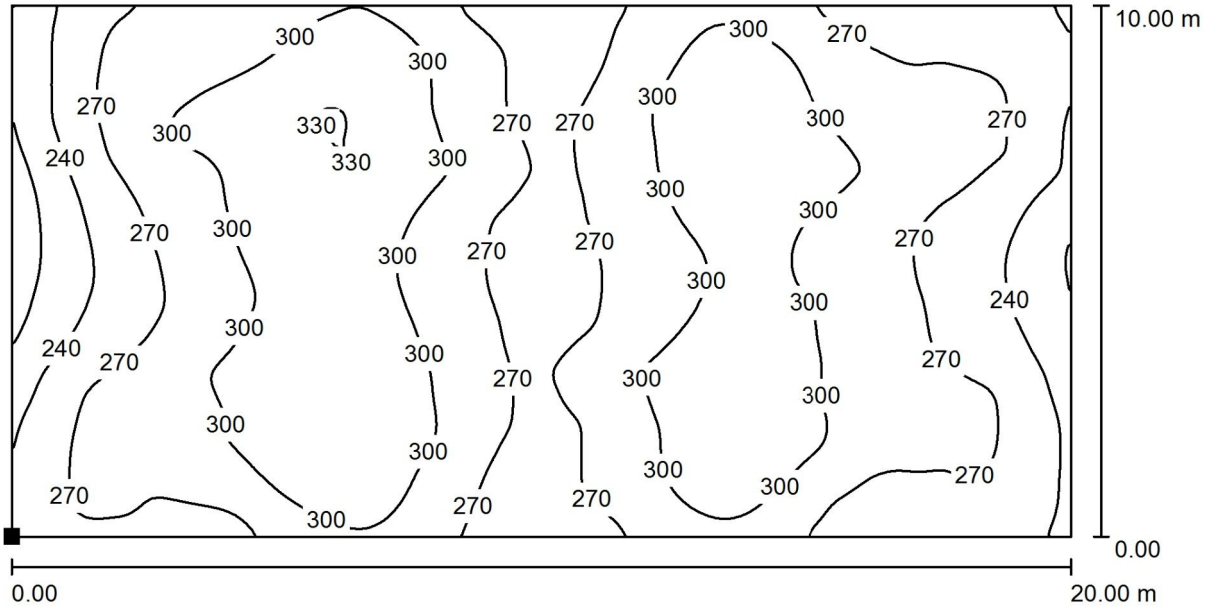
Tennis Court/ False Color



0 40 80 120 160 200 240 280 320 lx

Operator
 Telephone
 Fax
 e-Mail

Tennis Court / Floor Component 1 / Surface 1 / Isolines



Values in Lux, Scale 1 : 143

Position of surface in external scene:

Marked point:

(0.000 m, 0.000 m, 0.000 m)

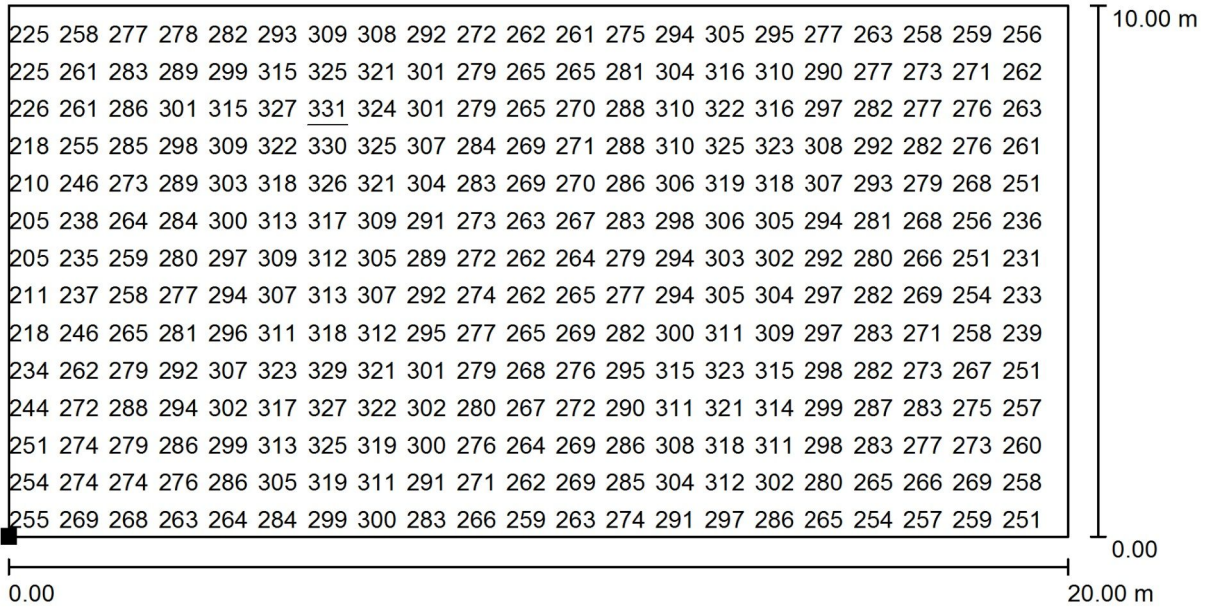


Grid: 128 x 128 Points

E_{av} [lx]	E_{min} [lx]	E_{max} [lx]	u0	E_{min} / E_{max}
282	193	331	0.685	0.584

Operator
 Telephone
 Fax
 e-Mail

Tennis Court/ Floor Component 1 / Surface 1 / Value



Values in Lux, Scale 1 : 143

Not all calculated values could be displayed.

Position of surface in external scene:

Marked point:

(0.000 m, 0.000 m, 0.000 m)



Grid: 128 x 128 Points

E_{av} [lx]	E_{min} [lx]	E_{max} [lx]	u0	E_{min} / E_{max}
282	193	331	0.685	0.584