



## S350 LED ceiling light

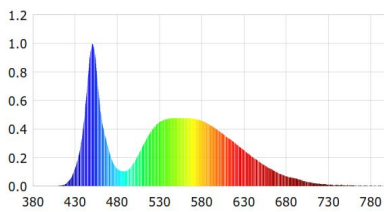
Ceiling lights fitted with either circline or butterfly fluorescent are typically meant for staircase, washroom and home lighting applications. A significant disadvantage of fluorescent lamp is generally encountering attenuation and quick wear and tear thus causes high cost of maintenance.

The aesthetic outlook of S350 is designed for replacement of those typical ceiling light in term of luminous performance. Besides that of low maintenance cost and quick payback, it reduces more than 50% of power consumption as compare to CFL or fluorescent.

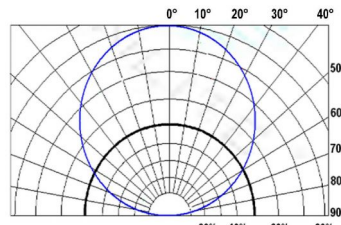


### General Characteristic

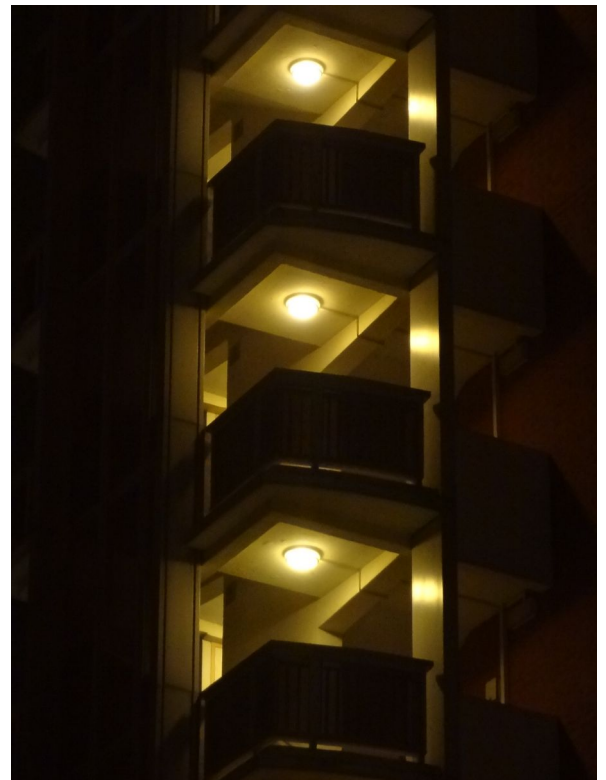
Light source	SMD2835 LED module
Color rendering index	CRI ≥80 Ra
Color temperature	3200K (K3); 4200 (K4); 5500 (K5)
Luminous efficacy	>80 lumen per watt
Power factor	≥0.95
Beam angle	120 degrees
Ingress protection	IP44
Operation temperature	-20°C to 50°C
Operation humidity	95% Rh @-20°C to 50°C
Housing structure	Die-cast aluminium alloy
Diffuser	Opaque white optical grade PC
Light transmission	85%
Industrial standard	IEC 62384 / LM-80 compliant
Certification	CE, FCC, RoHS



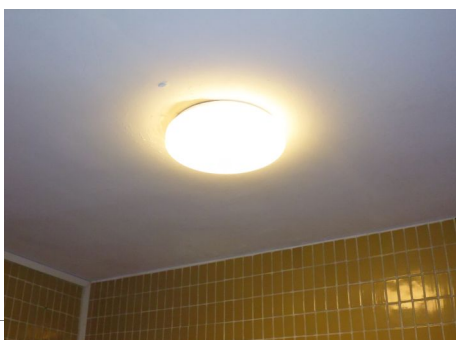
CIE Colorimetric Perimeters



Typical Spectral Distribution



Public staircase lighting application



Home lighting application

### S350 brief specifications

Model #	Power	Size	Height	Efficacy
S35050S-W10Kx	10W	Ø12" (300mm)	90mm	765~850 lumen
S35060B-W12Kx	12W	Ø12" (275mm)	85mm	918~1020 lumen
S35060S-W12Kx	12W	Ø14" (350mm)	105mm	918~1020 lumen
S35090S-W18Kx	18W	Ø14" (350mm)	105mm	1377~1530 lumen
S35120B-W24Kx	24W	Ø16" (400mm)	110mm	1836~2040 lumen