

# SUPABOARD®

HIGH PERFORMANCE BUILDING BOARD



**Non-Combustible**



**Fire Resistant**



**Moisture Resistant**



**Easy to Work, Fix and Decorate**



**Environmentally responsible production  
with ISO 14001 certification**



**Quality assurance production  
ISO 9001:2000 certification**

**Intumex®**  
ASIA PACIFIC

**SUPABOARD®** is a strong, lightweight non-combustible building board for use in many fire resisting and general purpose building applications.

It is cured in steam autoclaves giving a high performance board which can be used in fire protection for providing up to 240 minutes fire protection; (Depending on system and application). It is simple to work and install, easy to decorate, it is resistant to the effects of moisture and will not rot or decay.

It is also ideal for use in buildings where there is a need for resistance to damp or high humidity, for example, swimming pools, bottling plants, food processing plants, kitchens, bathrooms etc.



**Non-Combustible**



**Fire Resistant**



**Moisture Resistant**



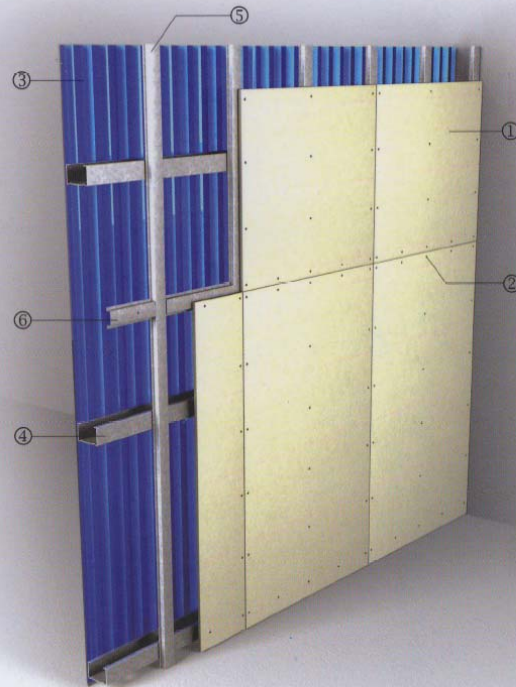
**Easy to Work, Fix and Decorate**



**Environmentally responsible production with ISO 14001 certification**

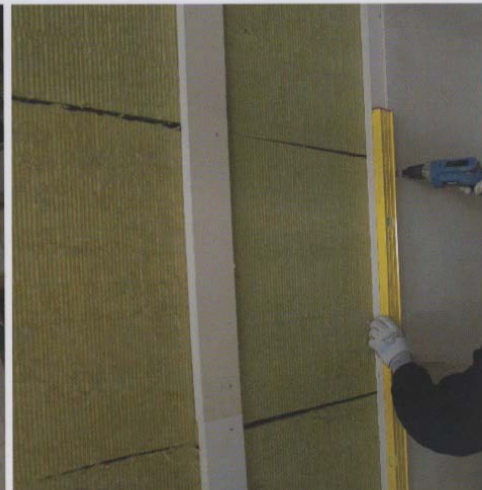
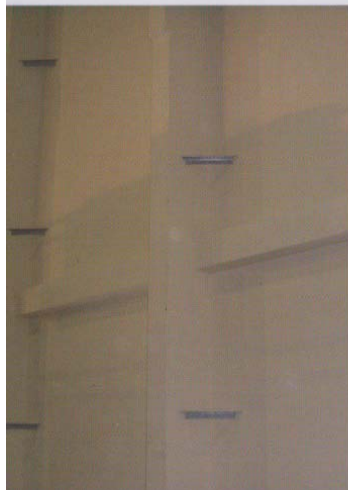


**Quality assured production ISO 9001:2000 certification**



Detail of annotations:

- ① 9mm thick SUPABOARD® fixed to steel top-hat sections.
- ② 25mm long M4 self-tapping screws at 300mm centres.
- ③ Steel cladding.
- ④ Steel sheeting rails at maximum 1500mm centres.
- ⑤ 15 x 25 x 50 x 0.5mm thick steel top-hat sections at 610mm centres.
- ⑥ 15 x 25 x 50 x 0.5mm thick steel top-hat sections at horizontal board joints.





## TECHNICAL PROPERTIES

PROPERTIES	DESCRIPTIONS	UNITS	VALUES	
The Board	Thickness	mm	6 / 9 / 12 / 15	
	Width	mm	1220	
	Length	mm	2440	
	Weight (approximately)			5.88 for 6mm board
				8.82 for 9mm board
			11.76 for 12mm board	
			14.7 for 15mm board	
Density	Normal dry density	kg/m <sup>3</sup>	980	
Strength	Flexural strength, across grain	MN/m <sup>2</sup>	7	
	Flexural strength, along grain	MN/m <sup>2</sup>	9.5	
	Compressive Strength	MN/m <sup>2</sup>	6.71	
Effect of Moisture	Water Absorption (BS 2972: 1989) Change in Volume	%	0.36	
	Nominal moisture content	%	5 to 9	
Thermal Performance	Thermal conductivity (approximately) at 20°C	W/m <sup>2</sup> K	0.186	
Fire Performance	Surface spread of flame			
	BS 476: Part 7		Class 1	
	Building Regulations Classification		Class 0	
Tolerances	Manufacturing tolerances:			
	Length	mm	± 5	
	Width	mm	± 5	
	Thickness			± 0.5 for 6mm board
				± 0.5 for 9mm board
			± 0.5 for 12mm board	

WHEN MECHANICALLY MACHINING THIS PRODUCT, AIRBORNE DUST MAY BE RELEASED WHICH MAY BE HAZARDOUS FOR HEALTH. DO NOT BREATHE THE DUST. AVOID CONTACT WITH SKIN AND EYES. USE APPROPRIATE DUST EXTRACTION EQUIPMENT AT ALL TIMES. RESPECT REGULATORY OCCUPATIONAL EXPOSURE LIMITS FOR TOTAL INHALEABLE AND RESPIRABLE DUST. WEAR APPROPRIATE PERSONAL SAFETY PROTECTION AT ALL TIMES. FOR MORE DETAILED INFORMATION PLEASE CHECK THE MATERIAL SAFETY DATA SHEET APPLICABLE TO THIS PRODUCT, WHICH IS AVAILABLE UPON REQUEST.

The physical properties given in the table on this page are mean values given for information and guidance only. If certain properties are critical for a particular application, it is advisable to consult your nearest Intumex Technical Department.

### COMPOSITION

SUPABOARD® is a matrix engineered mineral board reinforced with selected fibres and fillers. It is formulated without asbestos or any other inorganic fibre.

### DESCRIPTION

SUPABOARD® is beige in colour and has a smooth surface on one face with a lightly textured reverse face.



**Intumex Asia Pacific**

**HONG KONG**

Room 1011, C.C. Wu Building  
302-308 Hennessy Road  
Wanchai  
Tel: +852 2895 0265  
Fax: +852 2576 0216

**AUSTRALIA**

Unit 1, 175 Briens Road  
Northmead, NSW 2152  
Tel: +61 (2) 9683 2872  
Fax: +61 (2) 9630 0258

**SINGAPORE**

10 Science Park Road  
#03-14 The Alpha  
Singapore Science Park II  
Singapore 117684  
Tel: +65 6292 7888  
Fax: +65 6294 2576

Email: [info@intumex-ap.com](mailto:info@intumex-ap.com)

[www.intumex-ap.com](http://www.intumex-ap.com)

an **Etex** GROUP company

Your local supplier

 **FRAMEWORK**  
BUILDING PRODUCTS (PTE) LTD

No.2, Aljunied Avenue 1,  
Singapore 389977  
Tel: (65) 6861 5838  
Fax: (65) 6861 3387  
Email: [fwsin@pacific.net.sg](mailto:fwsin@pacific.net.sg)  
Website: [www.framework.com.sg](http://www.framework.com.sg)