

B0034 | MARINE LOADING ARM



The B0034 Marine loading arm is designed to serve big tanker ships up to 250.000 DWT and to meet the most stringent specifications and requirements of the petrochemical industry. Its capability has been proven with many years of trouble free operation worldwide.

The B0034 design includes a special support frame for the inboard arm and a rigid link pantograph balancing system with independent counterweights directly linked to the inboard and outboard arm.

Thus providing that accurate balance is definitely ensured throughout all manoeuvring and connecting positions.

The special design of the inboard arm support structure additionally provides the optimum in regards to operational safety aspects, low weight of the arm and lowest wind loads imposed to the jetty structure.

The advantages over hose loading facilities are ease of handling, higher availability/flexibility, less man power and minimum maintenance required while providing maximal operational safety and minimized operational cost (cost of ownership).

The B0034 is designed for hydraulic operation and can be fitted with the most sophisticated ancillary equipment.

Additional equipment is available.

DESIGN FEATURES

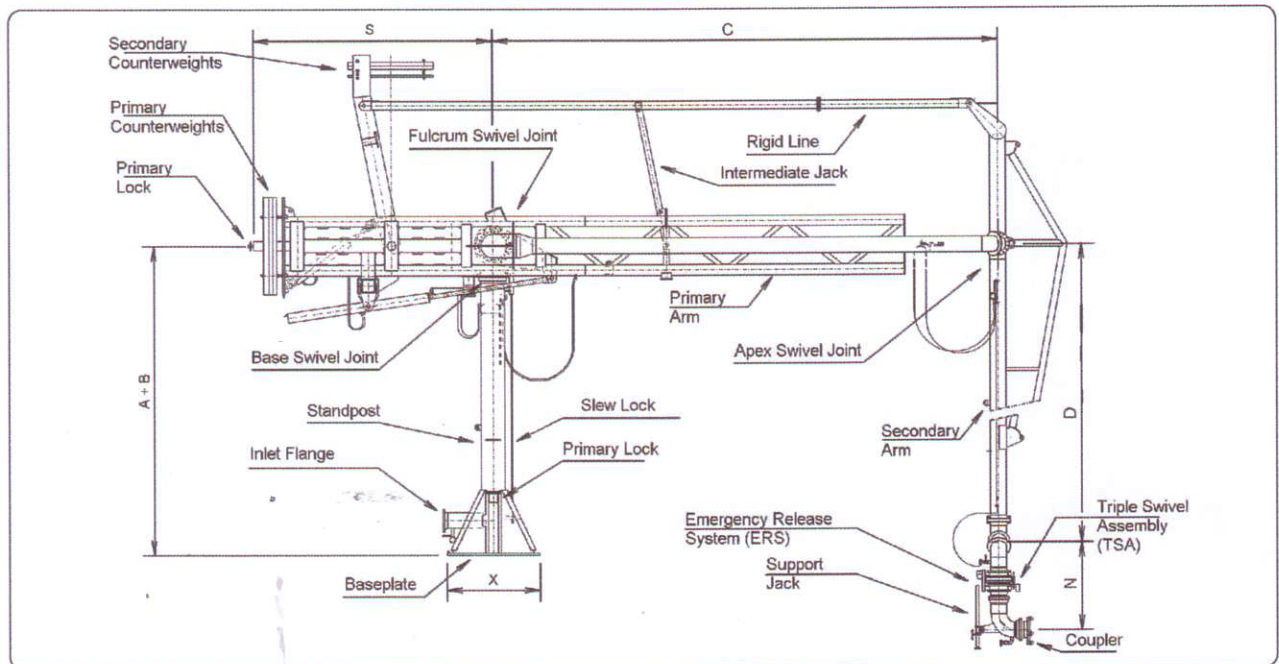
- * Sizes from 4" up to 16"
- * Pressure ratings from PN 10 up to PN 40
- * Materials: carbon steel, low temperature steel, stainless steel
- * Temperature range: from -50 °C up to +200 °C
- * Customized solutions on request
- * EMCO high performance swivel joints

B0034

B0034 | MARINE LOADING ARM

MATERIALS AND TECHNICAL DATA – INCL. EMERGENCY RELEASE SYSTEM

NB	A + B	X	C	D	N	S	Flow rate	Weight	Bending moment
	mm	mm	mm	mm	mm	mm	m ³ /h	kN	kNm
8"	7000	1500	10000	10000	1350	6000	1100	190	490
10"	8000	1500	10000	10000	1750	7000	1700	240	760
12"	8000	1500	12000	12000	2100	7000	2500	320	850
16"	8000	1500	13000	13000	2400	7000	4000	380	970



DESIGN

- * Fully balanced with independent counterweights for inboard and outboard arm
- * Special support frame to reduce imposed mechanical loads
- * Light weight design
- * Swivel joints either welded-in or flanged
- * For transfer of mineral oil, chemicals, and liquefied gases (incl. LNG)
- * Seals available in Buna-N, Viton, PTFE or other specific materials

ACCESSORIES

- * Range alarm system
- * Drainage connections
- * Emergency release system (ERS)
- * Hydraulic operation
- * Hydraulic or manual quick coupler
- * Insulation flange
- * Nitrogen purge line
- * drain line
- * Vacuum breaker
- * Vapour return line

Whilst the content of this leaflet has been edited with the greatest care, we are not liable for any errors and/or omissions. Subject to change without notice.

B0034 EN 05/08

Better by Design



EMCO WHEATON

A Gardner Denver Product

EMCO WHEATON GmbH
Emcostraße 2-4 · 35274 Kirchhain · Germany
Phone +49 6422 84-0 · Fax +49 6422 5100
www.emcowheaton.com · assist@emcowheaton.com