

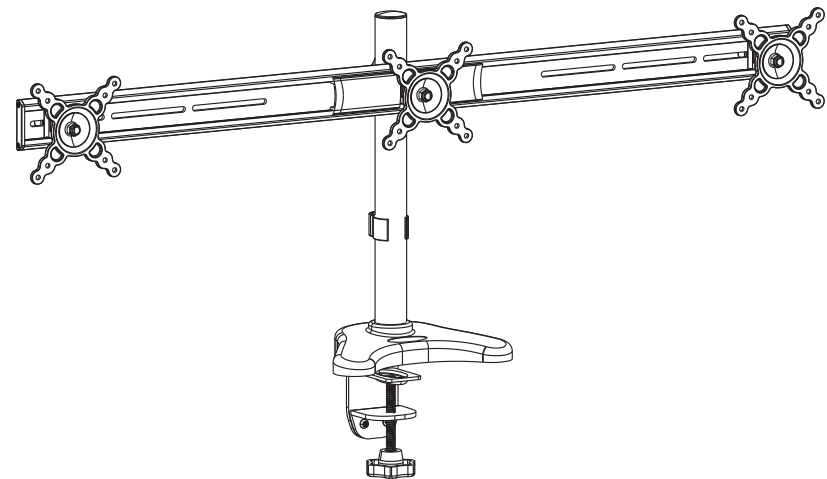
Installation Guide (For BKT-587)

Important Notes:

All Plasma / LCD TV brackets are thoroughly inspected and fully tested operational in factory.
We accept no liability whatsoever for any losses due to improper operation, or any unauthorized alteration.
All trademarks contained in this installation guide are the property of their respective owners.

Desktop mount

MODEL.:BKT-587



- TV Size Range: 10"~24"
- Max load capacity of each TV plate :
8Kg/17.6lbs
- Integrated Cable management

Thank you for choosing our product

Warning

This product contains small items that could be a choking hazard if swallowed. Keep these items away from young children!

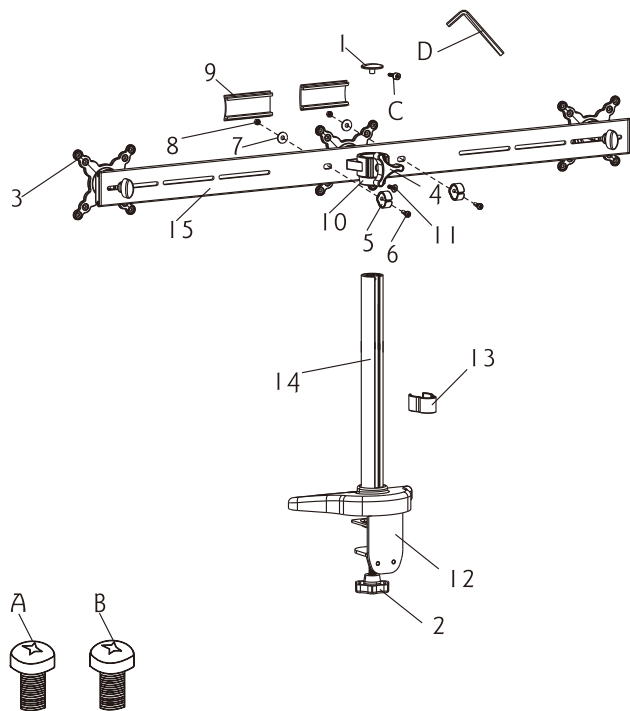
1. Make sure these instructions are read and completely understood before attempting installation. If you are unsure of any part of this installation, contact a professional installer for assistance.
2. The wall or mounting surface must be capable of supporting the combined weight of the mount and the display; otherwise the structure must be reinforced.
3. Safety gear and proper tools must be used. A minimum of two people are required for this installation. Failure to use safety gear can result in property damage, serious injury or death.

CAUTION

Please read this guide before installation.
Ensure the correct installation. Keep away from high frequency or power equipment to avoid disturbance. Choose desk to put this product.
We can not be responsible for any damage caused by wrong installation.

Important: If don't understand about right install ways,
please consult to normal installing specialist.

Hardware Kit:

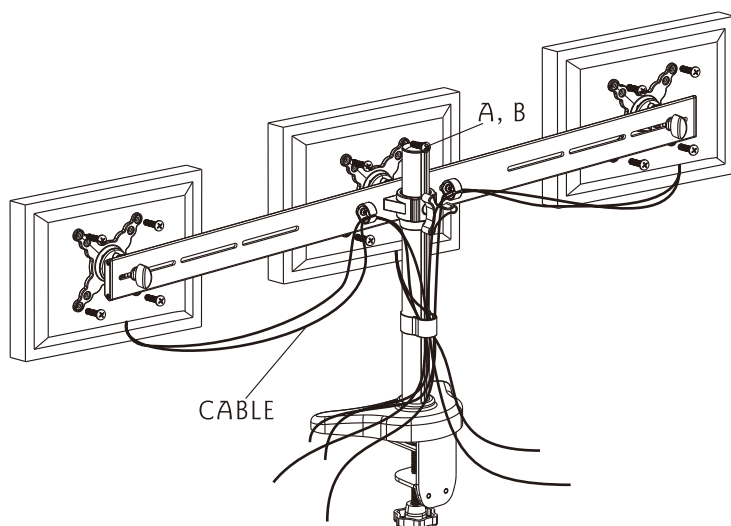


ID	Qty	Description
1	1	Tube Cover
2	1	Hand handle
3	2	TV plate
4	1	Knob
5	2	Cable management clip
6	2	M4×12mm bolt
7	2	φ5.3xφ15x1.2 washer
8	2	M4 nut
9	2	Plastic cover

ID	Qty	Description
10	1	Fixed wreath
11	1	M5x10mm sunk bolt
12	1	Bottom support
13	1	Cable cover
14	1	Tube
15	1	Long steel arm
A	12	M4×12mm bolt
B	12	M5×12mm bolt
C	1	M4X10mm bolt
D	1	3X3mm Wrench

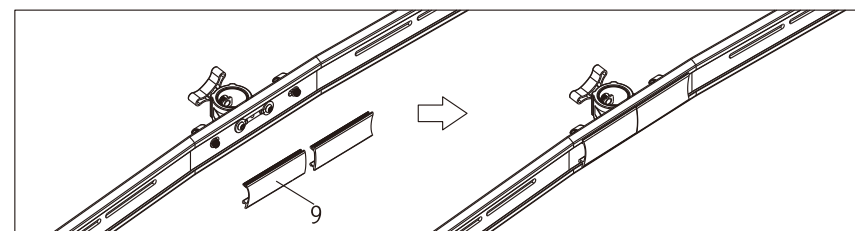
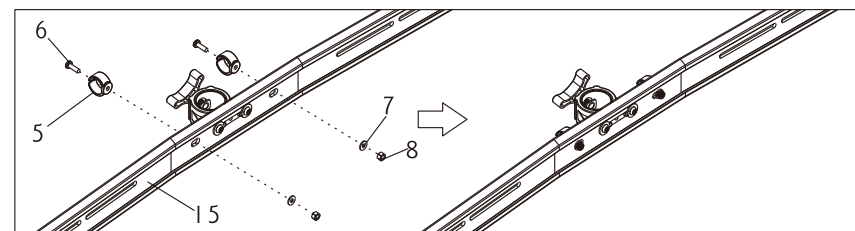
Part 4-Attaching TV plate to screen

Center TV plate on back of the screen and align the twelve mounting holes. Select screws(A,B). Attach TV plate to screen using twelve selected screws (A,B). Tighten screws firmly. Do not overtighten. (picture 3)



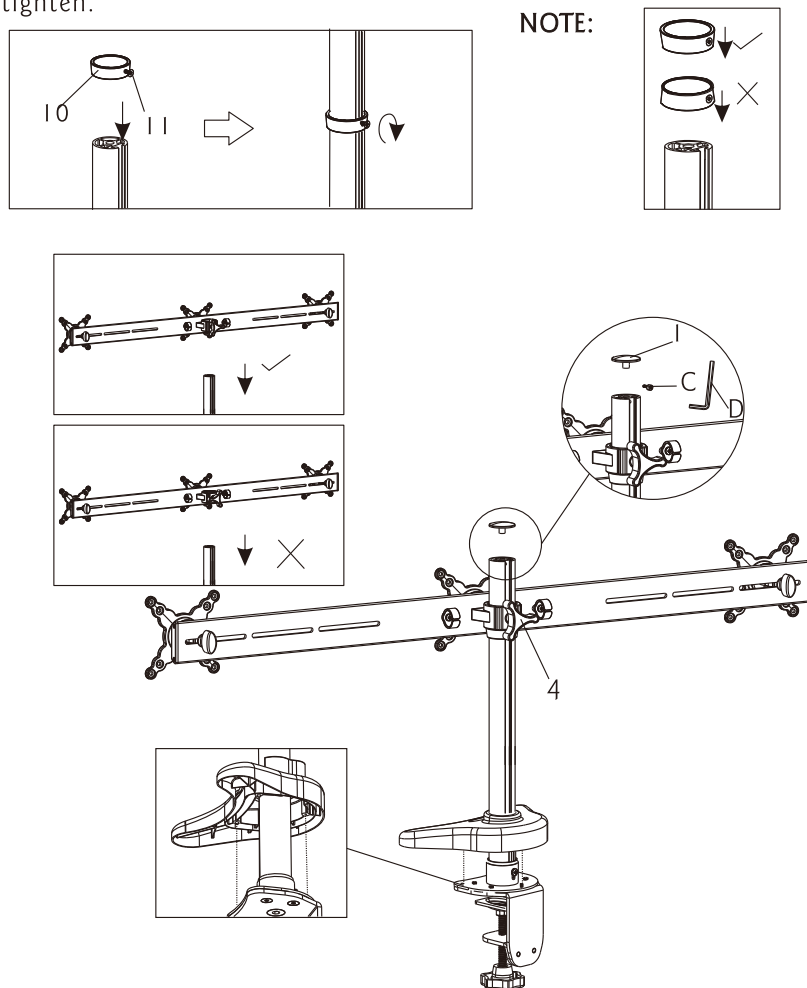
Part 1-Fixed Long steel arm

Install the cable cover(5),using two bolts (6) and two washers (7), fix it onto the left and right side of the long steel arm(15) with nut (8). At last,install the plastic cover(9).



Part 2-Install TV plate and fixed wreath

First install the plastic cover, then fixed the wreath(10) on the tube by M5x10mm sunk bolt(11). Once the wreath fixed, then slide the TV plate into the tube and fixed it by knob(4). When fixed wreath and TV plate are installed, put on the tube cover(1) and use (C) by wrench(D) to make it tighten.



Part 3-Fitting the bottom support on the desk

Choose the position of the base you want installed. Make sure there is enough space to spread display considering the show size. The desk should be between 15mm to 55mm thick and strong enough to bear the force caused by your display.

