

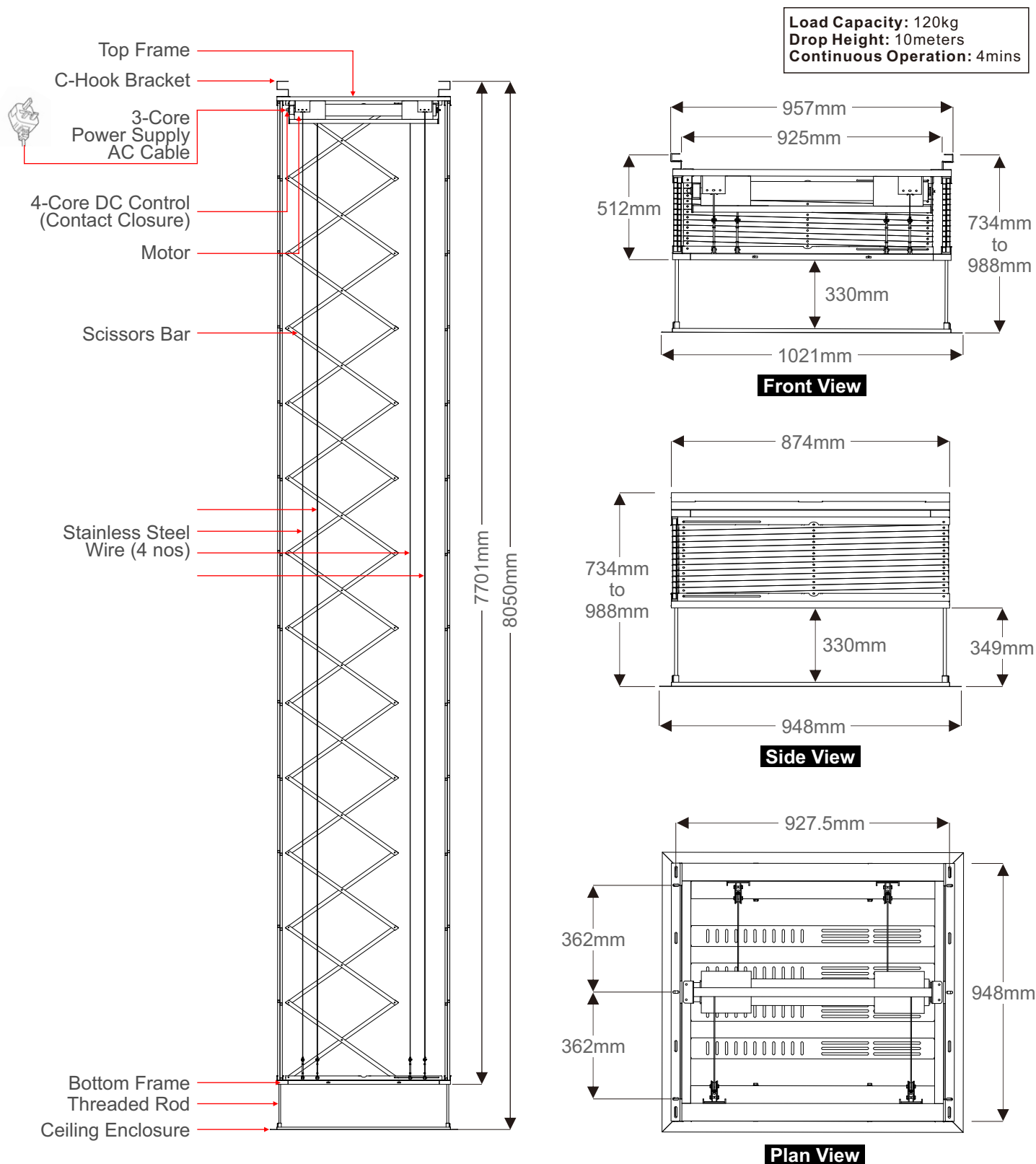
# Installation Guide (PLT-419C)

PLT

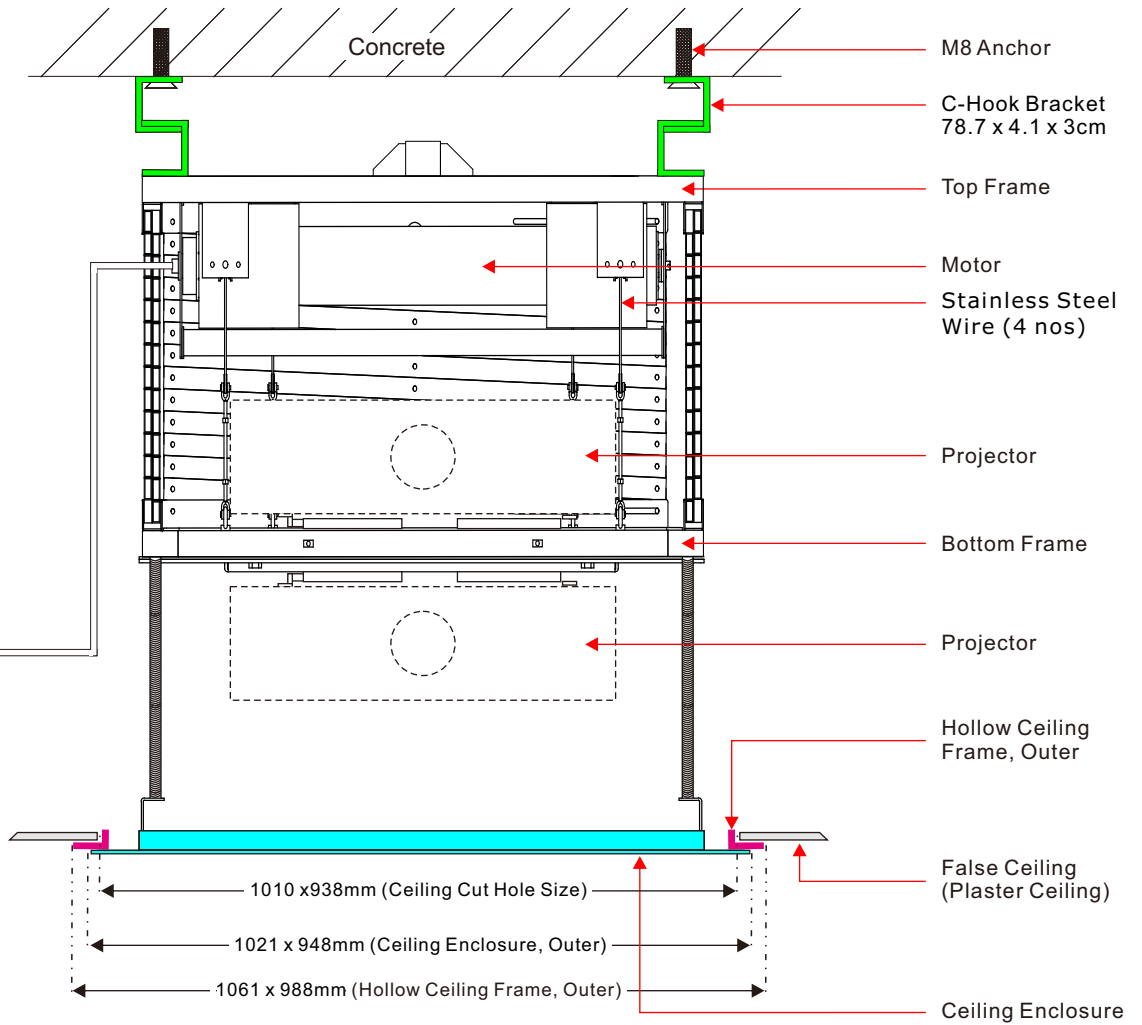
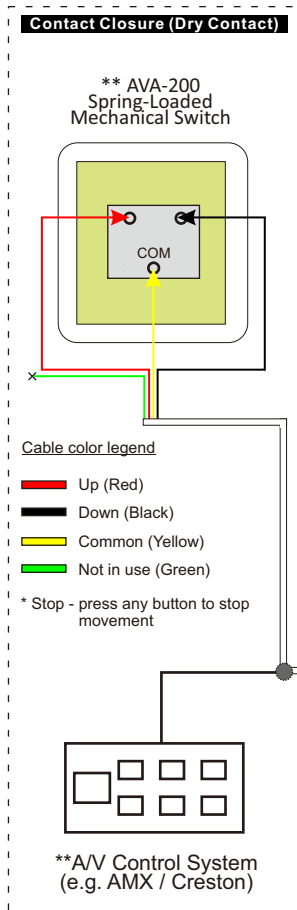
**Important Notice:** Do not turn on power to the projector lift until it is completely installed on the ceiling.

**Warning:** Caution with main supply and live wires. Install with qualified technician or trained personnel.

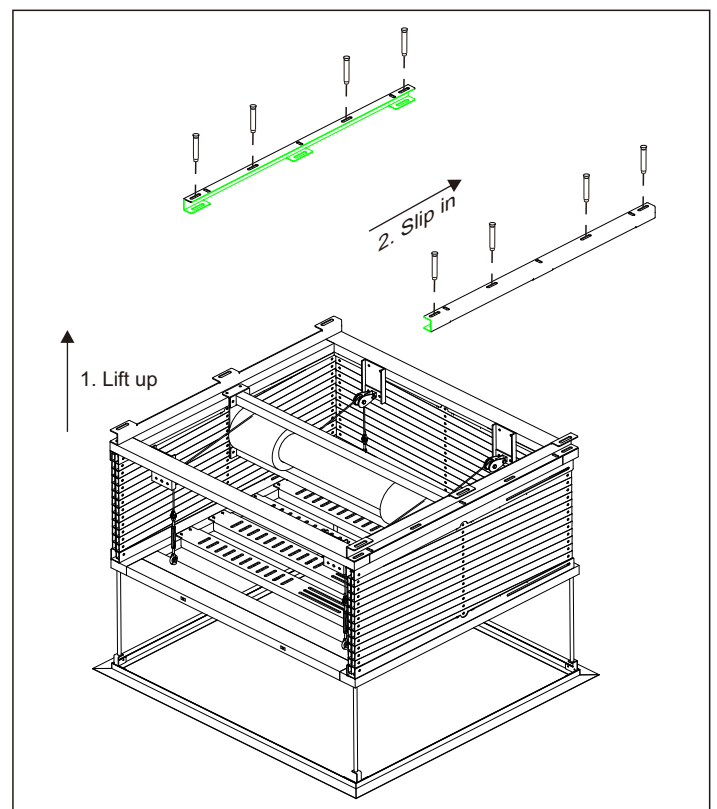
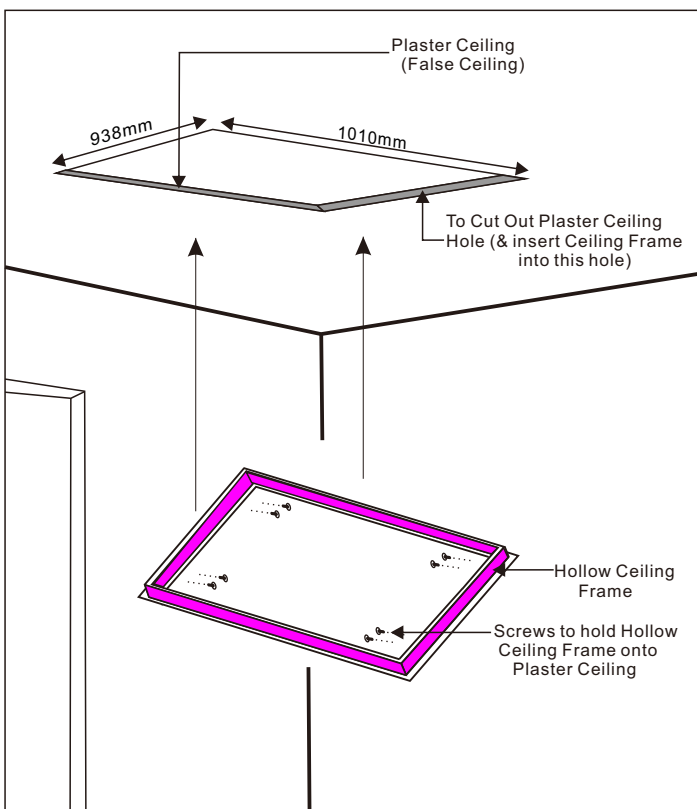
Motor built-in with thermostat to prevent overhead, it allows 4mins of continuous operation. In other words, motor allow continuous operation 4 times of full height travel up/down before temporary disable. Wait for 1 hour, allow motor cool to its original cool state.



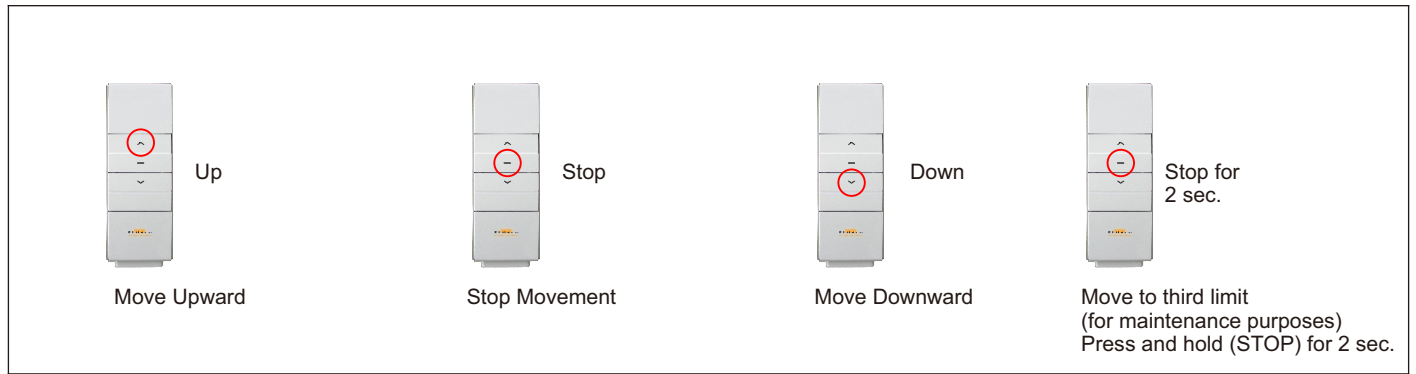
Model	Kept Position Height	Travel Distance	Load Capacity
PLT-419C	734mm to 988mm *Depending on the lift drop height	H = 4000mm to 10000mm	120kg



**\*\* Momentary Contact closure connection (dry contact, normally open, voltage free).**  
 Recommended to set close contact for 1.5sec for best working condition.  
 Any voltage above 3Vdc voltage will damage the motor.  
 Suitable to use with control systems (example: AMX, Creston, Extron, ..etc)  
 Warranty void if damaged is caused by inappropriate use



## RF Remote Operation

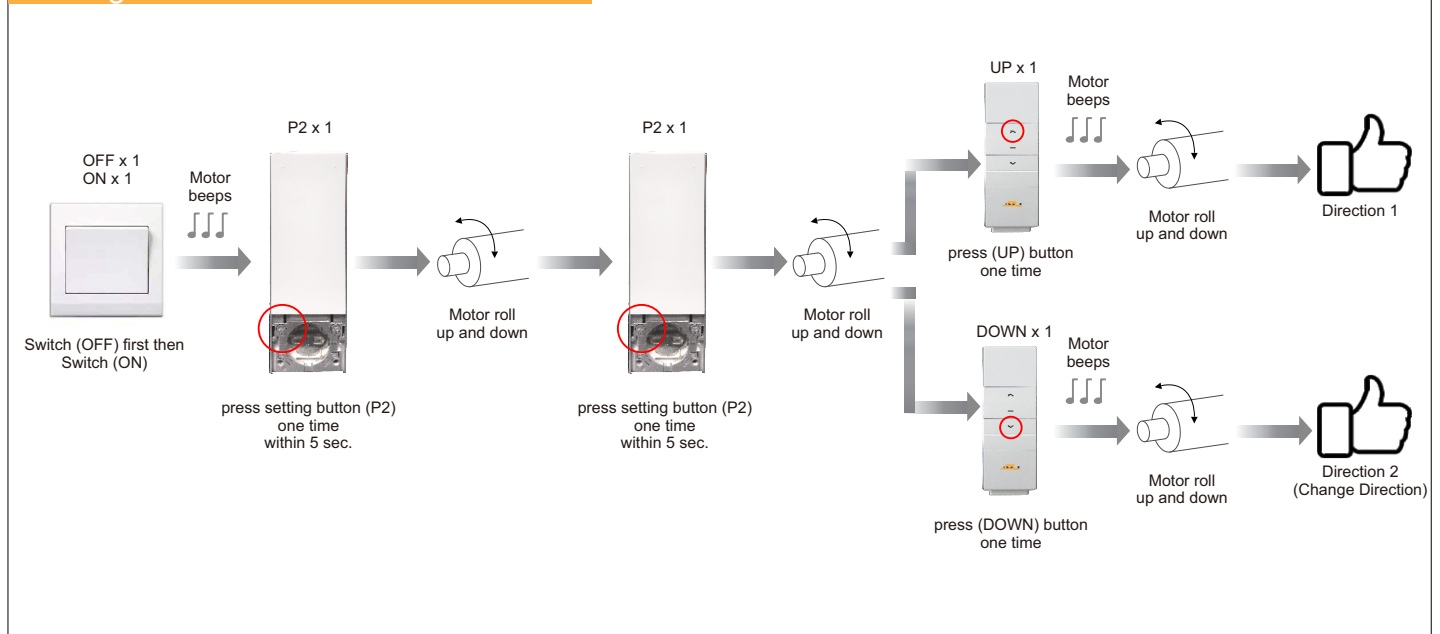


## Mechanical Switch (AVA-200, AVA-200+, Third-Party Control)

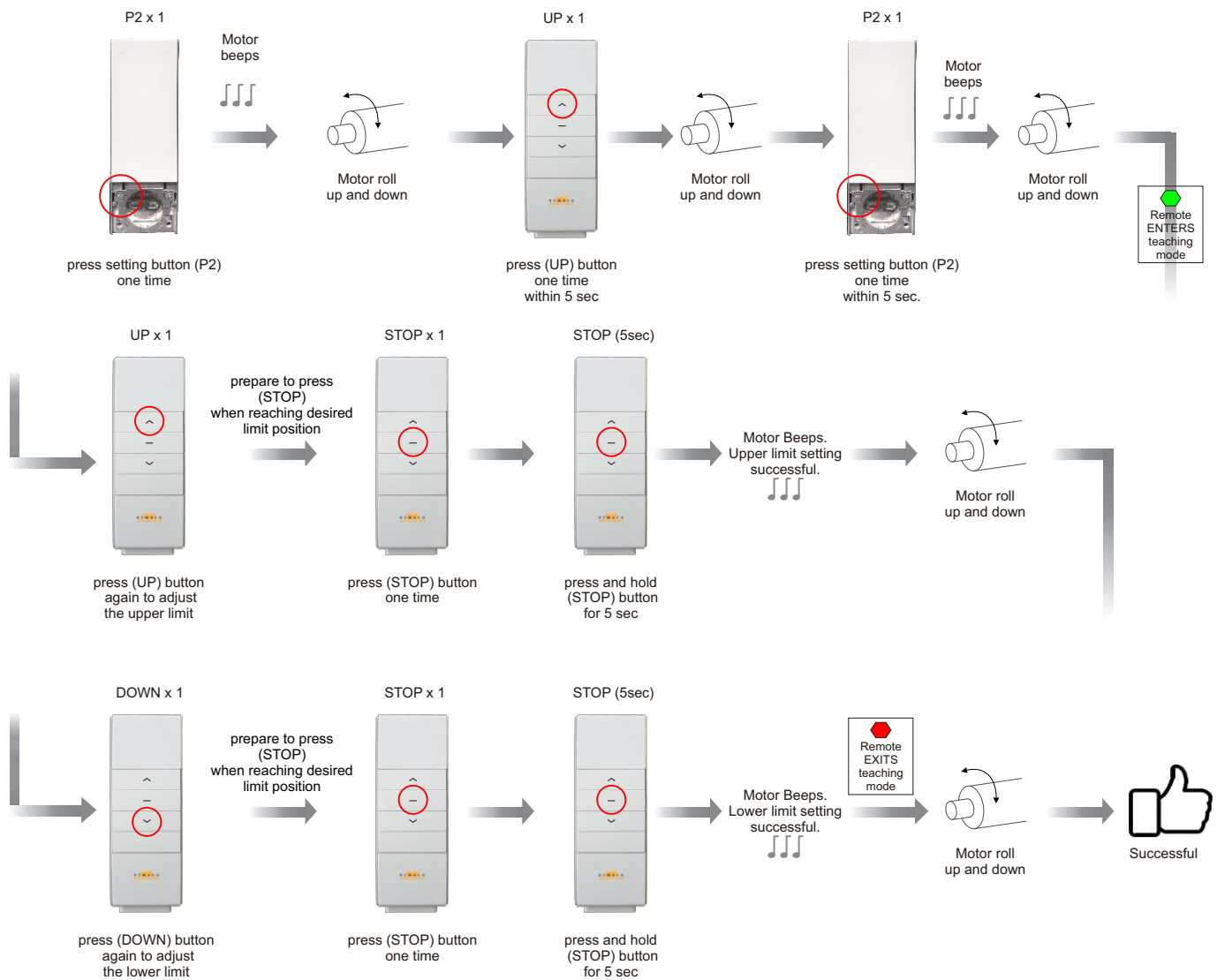


## Pairing, Limit Position Settings, and Deleting

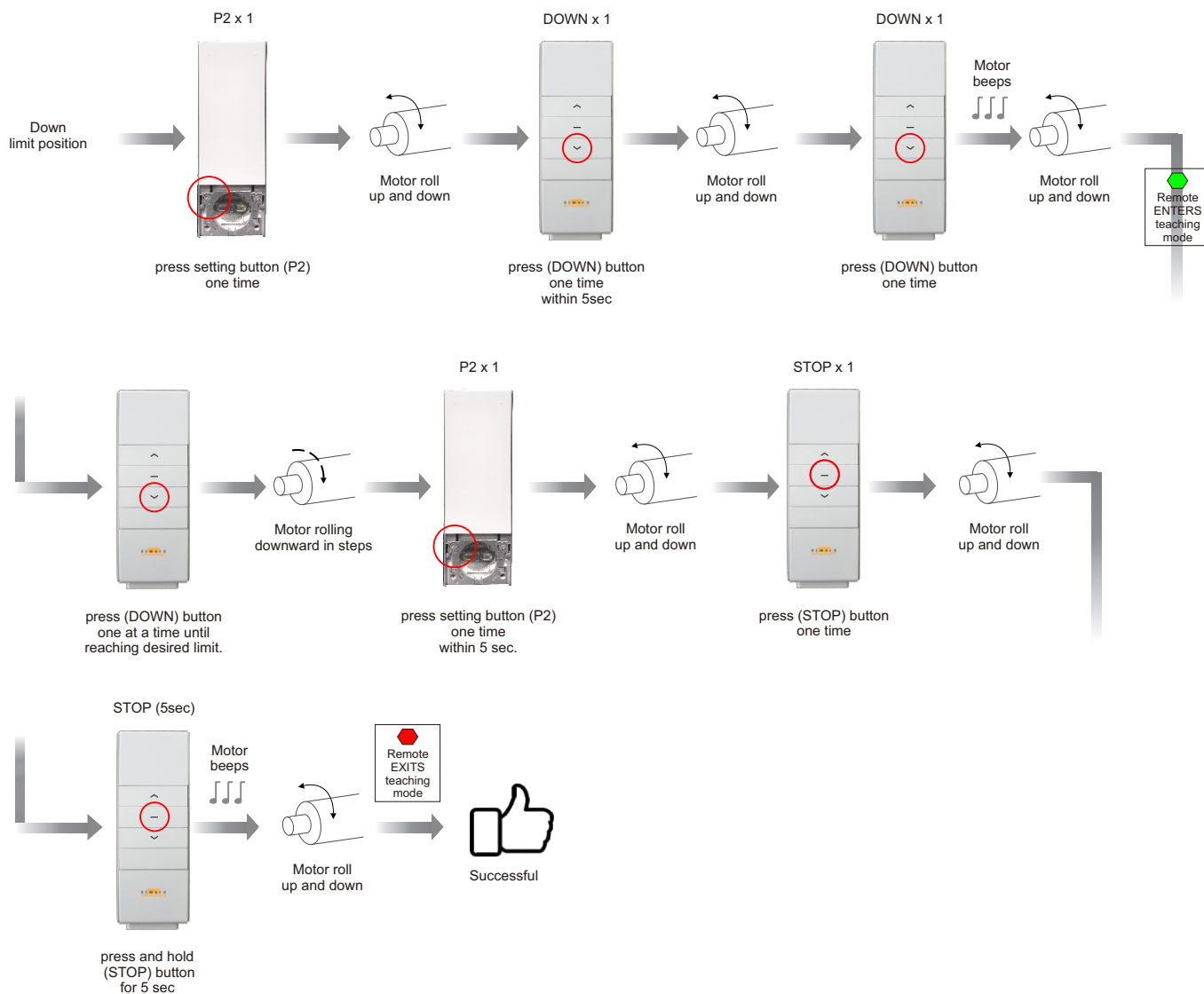
### Pairing RF Remote to Electronic Motor



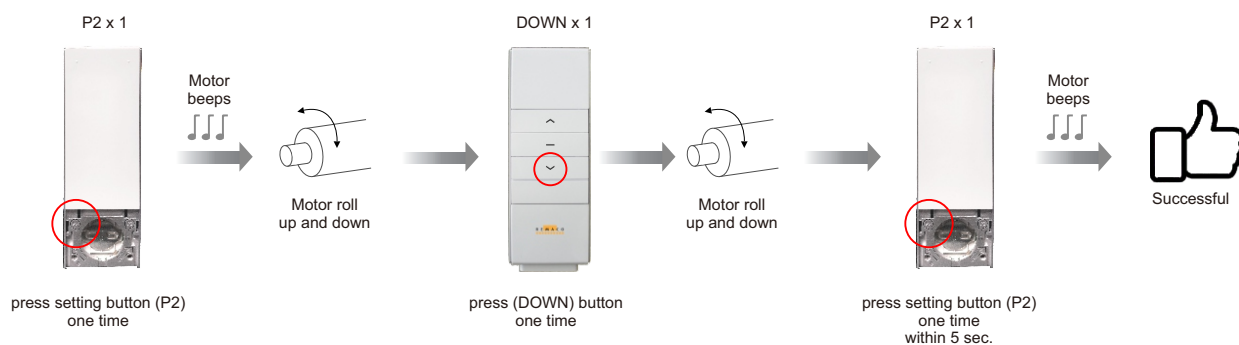
## Setting of Upper and Lower Limit



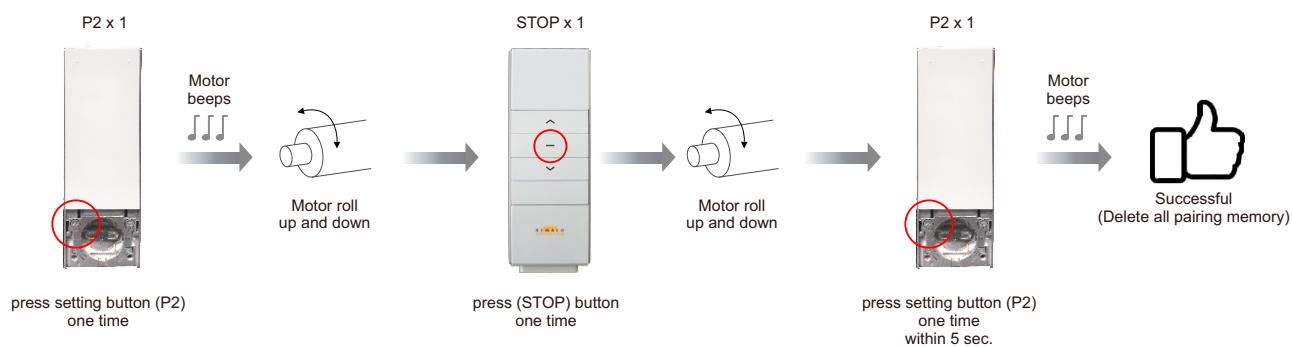
## Setting of Third Limit (Below Lower Limit for Maintenance)



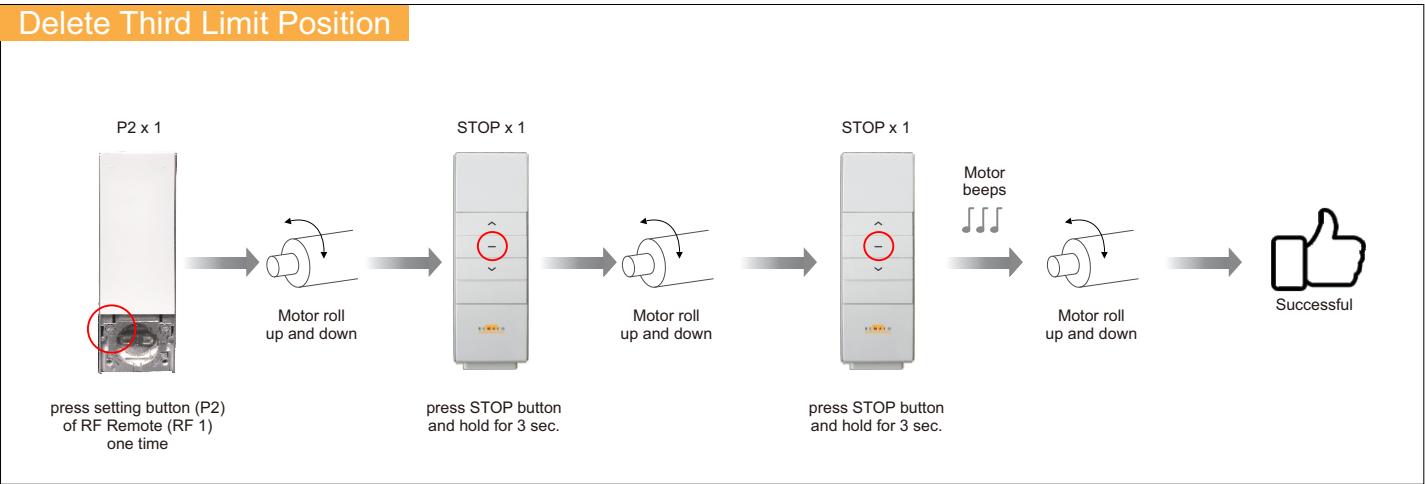
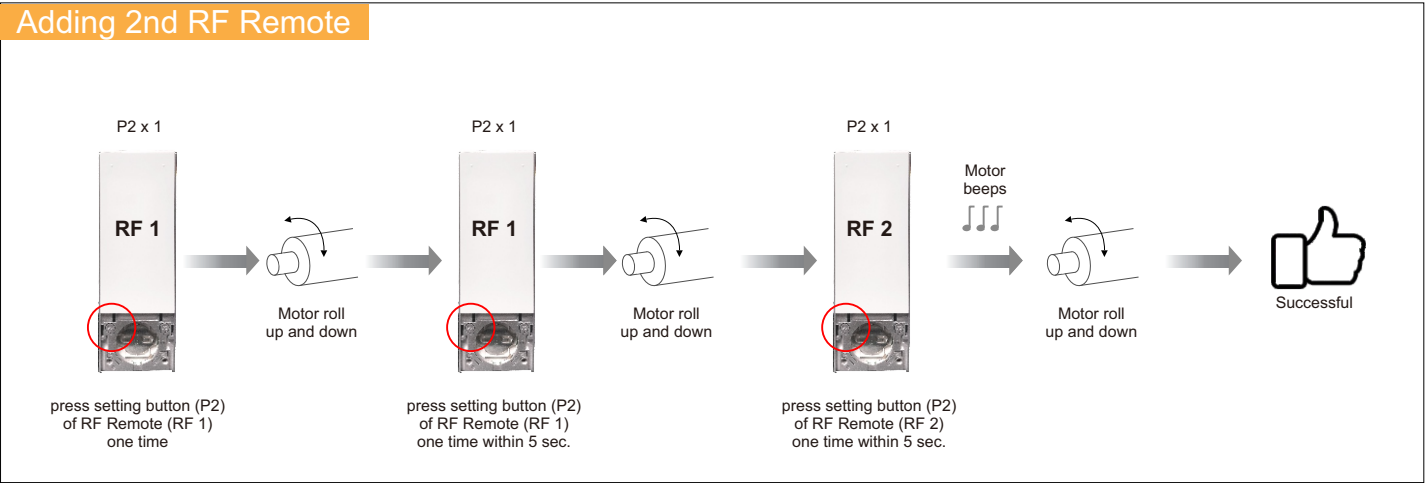
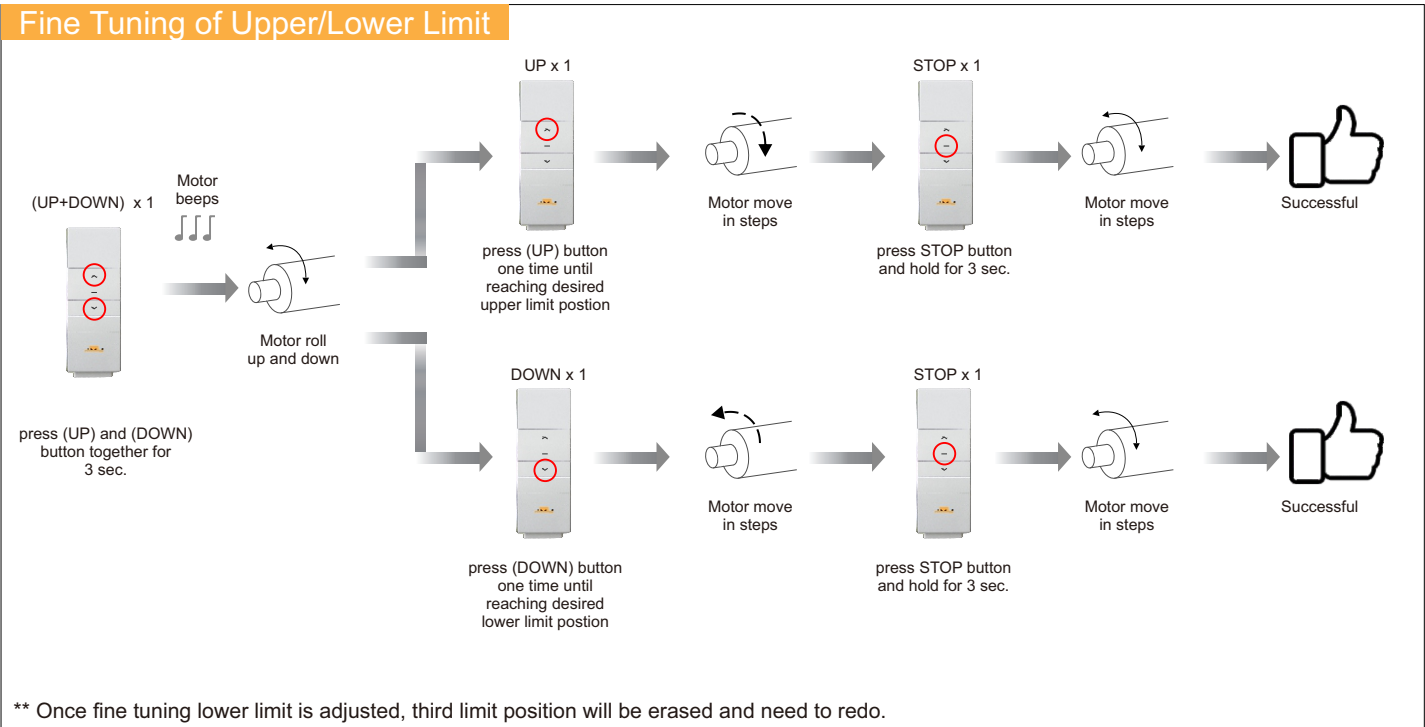
## Delete the Limits



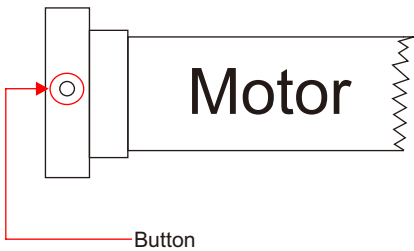
## Delete Memory of RF Remote Pairing



Appendix A (Set Only When Required)



Appendix B (Another Setting method by Motor Button)



Change Direction

Press and Hold Button for 5 sec.

Motor beeps x 3

Motor roll up and down

Successful

Factory Default Reset

Press and Hold Button for 10 sec. (Do not release)

Motor beeps x 3

Motor roll up and down

5sec.

Motor beeps x 3

Motor roll up and down

Motor roll up and down

Next 5sec.

Successful

## Appendix C (Assemble threaded rod and spring to ceiling enclosure)

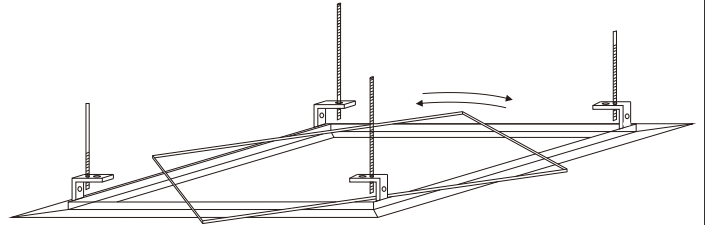


### Parts:

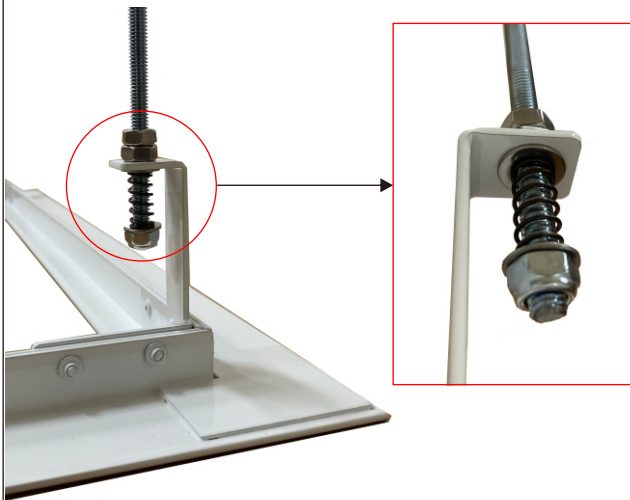
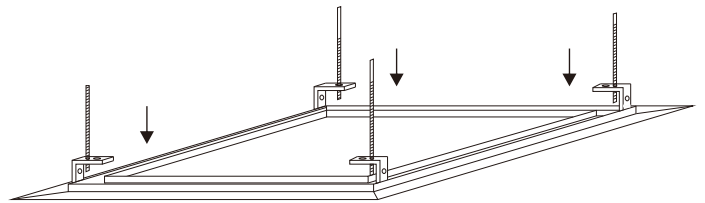
1. Ceiling Enclosure
2. 4nos. x Threaded Rod & Spring
3. Springs, Nuts and Washers

### Simple Method to insert false ceiling

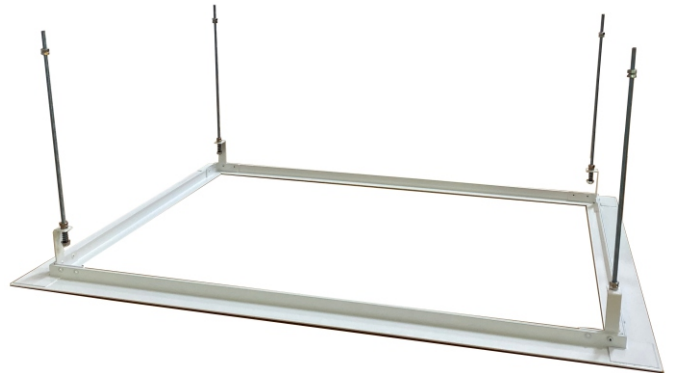
Lay false ceiling board 45 degree on false ceiling frame as shown.



Rotate and false ceiling board will position correctly.



Insert threaded rod and spring as shown and tighten with nuts and washers.



Fully assembled ceiling enclosure.

**End**