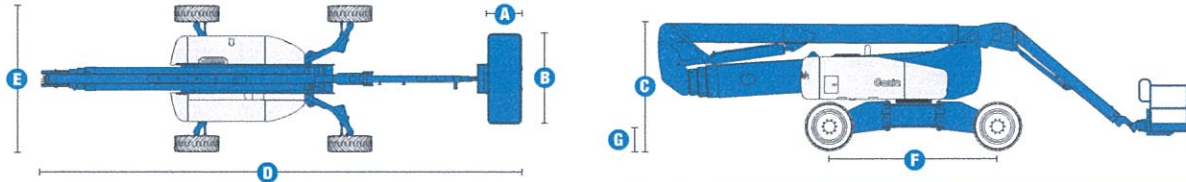


SELF-PROPELLED ARTICULATING BOOMS

Z™-135/70

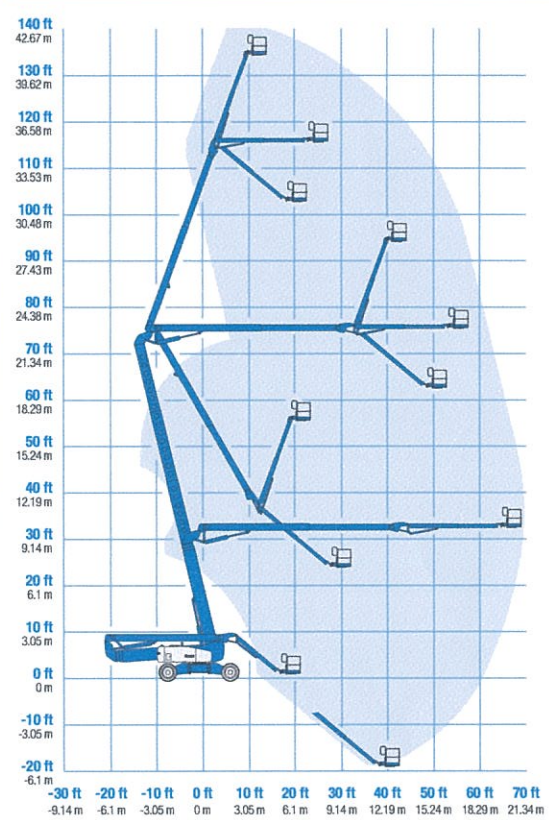


Specifications



MODEL		Z™-135/70	
MEASUREMENTS	US	Metric	
Working height maximum*	141 ft	43.15 m	
Platform height maximum	135 ft	41.15 m	
Horizontal reach max - riser extended	59 ft 2 in	18.03 m	
Horizontal reach max - riser retracted	69 ft 9 in	21.26 m	
Up and over clearance maximum - riser extended	75 ft 6 in	23.01 m	
riser retracted	32 ft 6 in	9.91 m	
Below ground reach	19 ft 3 in	5.87 m	
A Platform length - 8 ft / 6 ft model	3 ft / 2 ft 6 in	.91 m / .76 m	
B Platform width - 8 ft / 6 ft model	8 ft / 6 ft	2.44 m / 1.83 m	
C Height - stowed	10 ft 1 in	3.07 m	
D Length - stowed	42 ft 5 in	12.93 m	
E Width - axles extended	12 ft 11 in	3.94 m	
Width - axles retracted	8 ft 1 in	2.46 m	
F Wheelbase - axles extended	13 ft 6 in	4.11 m	
Wheelbase - axles retracted	15 ft 6 in	4.72 m	
G Ground clearance - center	1 ft 8 in	.51 m	

RANGE OF MOTION Z™-135/70



PRODUCTIVITY			
Lift capacity	600 lbs	272 kg	
Platform rotation	160°		
Vertical jib rotation	110°		
Turntable rotation	360° continuous		
Turntable tailswing - axles extended riser up	2 ft 7 in	.79 m	
Turntable tailswing - riser down	14 ft	4.27 m	
Drive speed - stowed	3.0 mph	4.8 km/h	
Drive speed - raised	0.68 mph	1.1 km/h	
Lift speed to full height	96 sec		
Gradeability - stowed**	45%		
Inside turning radius - axles extended	7 ft 6 in	2.29 m	
Inside turning radius - axles retracted	18 ft 1 in	5.51 m	
Outside turning radius - axles extended	18 ft 6 in	5.64 m	
Outside turning radius - axles retracted	25 ft 6 in	7.77 m	
Controls	12 V DC proportional		
Tires	445/65 D22.5 18 ply foam-filled		

POWER

Power source	Deutz Diesel TD 2011 L04i 4-cylinder turbo diesel, 74 hp (55 kW) Perkins Diesel 804-33T 4-cylinder turbo diesel, 83 hp (62 kW) Cummins Diesel B3.3T 4-cylinder turbo diesel, 80 hp (59.8 kW)		
Auxiliary power unit	12 V DC		
Hydraulic tank capacity	65 gal	246.1 L	
Fuel tank capacity	40 gal	151.4 L	

WEIGHT***			
	44,900 lbs	20,366 kg	

STANDARDS COMPLIANCE ANSI A92.5, CSA B354.4, EN 280, AS 1418.10

www.genieindustries.com

* The metric equivalent of working height adds 2 m to platform height. U.S. adds 6 ft to platform height.
** Gradeability applies to driving on slopes. See operator's manual for details regarding slope ratings.
*** Weight will vary depending on options and/or country standards.